

Hortonworks

Guide for Attempting an HDP Certification Practice Exam

Revision 2
Hortonworks University

Overview

Hortonworks University has developed a practice environment that emulates our actual exam environment. The practice environment consists of:

- An Amazon Machine Image (AMI) that is publicly shared
- A collection of tasks reflective of what you may be asked to perform on the actual exam

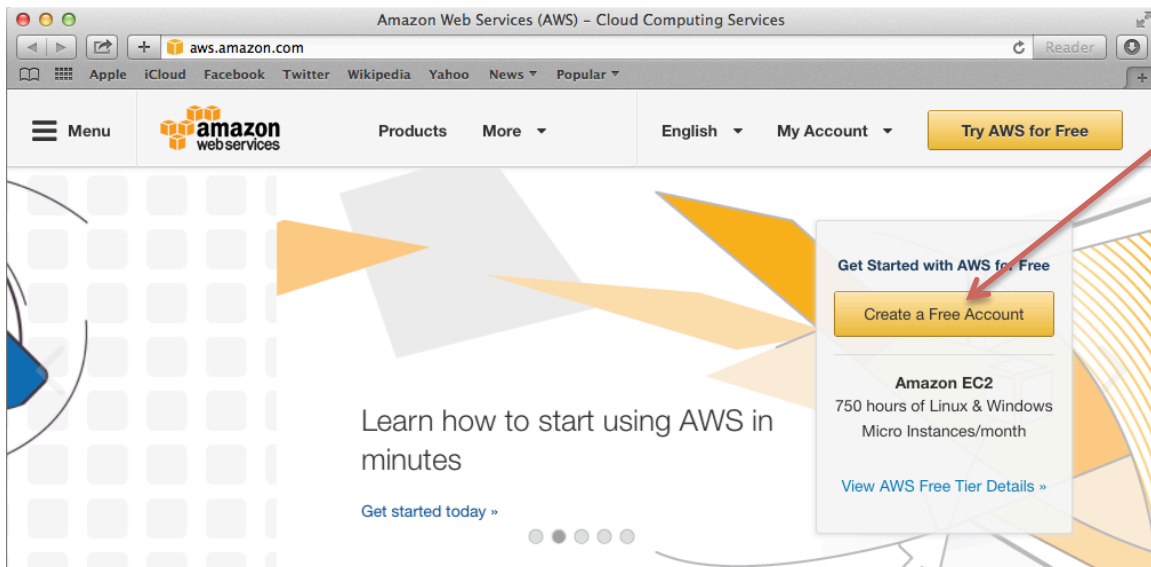
In order to take the practice exam, you need to create an Amazon Web Services (AWS) account and pay for the usage of an EC2 instance, as explained below in this guide. The cost is very minimal (around 30 cents/hour).

Complete the Following Steps

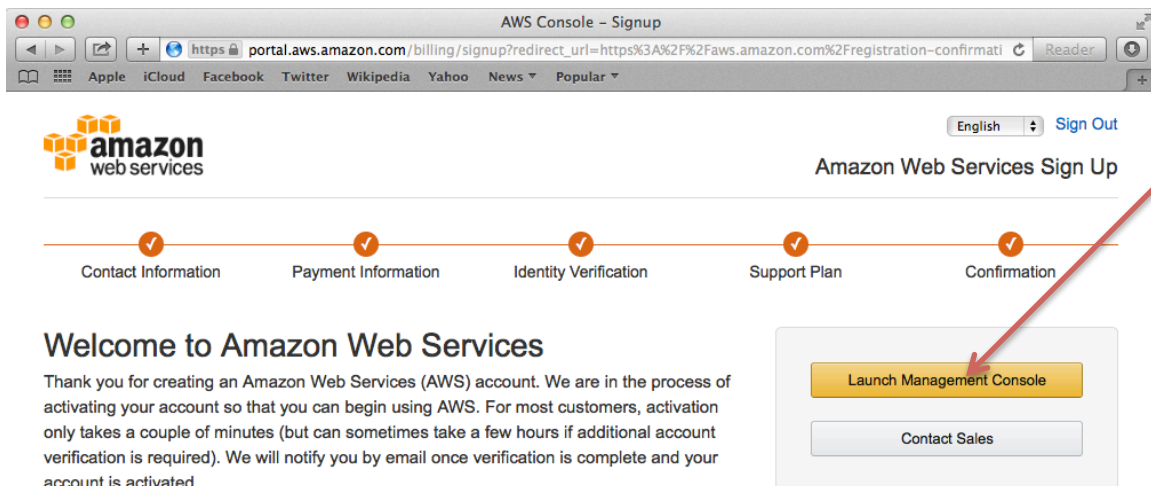
Step 1: Create an AWS Account

1.1. You need an Amazon Web Services (AWS) account. If you do not already have one, create an account at:

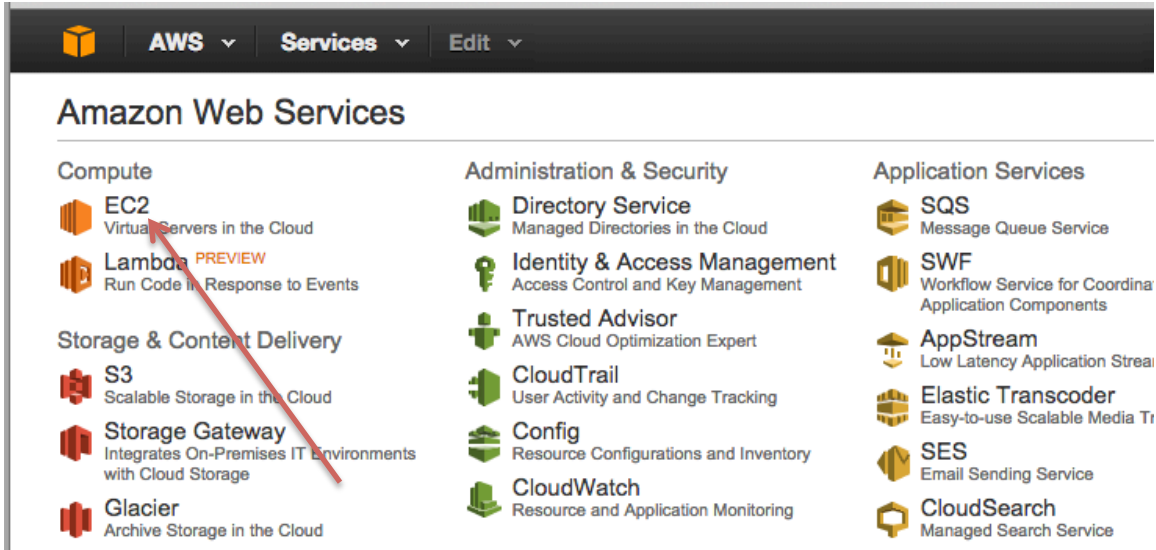
```
http://aws.amazon.com
```



1.2. Once you are signed in, launch the **Management Console**:



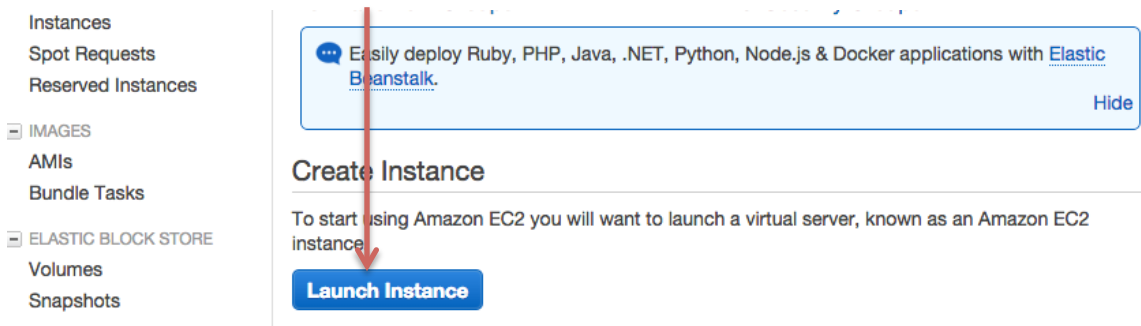
1.3. You should see the home page of your AWS Console:



Step 2: Run the EC2 Launch Instance Wizard

2.1. From the AWS Console, click on **EC2** to view your EC2 Dashboard.

2.2. Click the **Launch Instance** button:



2.3. You should see **Step 1** of the Launch Instance wizard:

Step 1: Choose an Amazon Machine Image (AMI)

[Cancel and Exit](#)

An AMI is a template that contains the software configuration (operating system, application server, and applications) required to launch your instance. You can select an AMI provided by AWS, our user community, or the AWS Marketplace; or you can select one of your own AMIs.

Quick Start 1 to 22 of 22 AMIs

- My AMIs**
- AWS Marketplace**
- Community AMIs**
 - Free tier only ⓘ

| | | |
|--|--|-------------------------|
| | Amazon Linux AMI 2014.09.2 (HVM) - ami-146e2a7c Free tier eligible The Amazon Linux AMI is an EBS backed image. The default image includes AWS command line tools, Python, Ruby, Perl, and Java. The repositories include Apache HTTPD, Docker, PHP, MySQL, PostgreSQL, and other packages. Root device type: ebs Virtualization type: hvm | Select 64-bit |
| | Red Hat Enterprise Linux 6.6 (HVM), SSD Volume Type - ami-48400720 Free tier eligible Red Hat Enterprise Linux version 6.6 (HVM), EBS General Purpose (SSD) Volume Type Root device type: ebs Virtualization type: hvm | Select 64-bit |
| | SUSE Linux Enterprise Server 12 (HVM), SSD Volume Type - ami-aeb532c6 Free tier eligible SUSE Linux Enterprise Server 12 (HVM), EBS General Purpose (SSD) Volume Type. Public Cloud, Advanced Systems Management, Web and Scripting, and Legacy modules enabled. Root device type: ebs Virtualization type: hvm | Select 64-bit |
| | Ubuntu Server 14.04 LTS (HVM), SSD Volume Type - ami-9a562df2 Free tier eligible Ubuntu Server 14.04 LTS (HVM), EBS General Purpose (SSD) Volume Type. Support available from Canonical (http://www.ubuntu.com/cloud/services). Root device type: ebs Virtualization type: hvm | Select 64-bit |
| | Microsoft Windows Server 2012 R2 Base - ami-b27830da Free tier eligible Microsoft Windows 2012 R2 Standard edition with 64-bit architecture. [English] Root device type: ebs Virtualization type: hvm | Select 64-bit |

Step 3: Find the AMI for the Practice Exam

3.1. Click the **Community AMIs** tab on the left-hand menu.

3.2. Type “**Hortonworks**” in the search box and press **Enter**:

Quick Start 1 to 5 of 5 AMIs

My AMIs

AWS Marketplace

Community AMIs

Operating system

- Amazon Linux
- Cent OS
- Debian
- Fedora
- Gentoo
- OpenSUSE
- Other Linux
- Red Hat
- SUSE Linux
- Ubuntu
- Windows


Architecture

Search: Hortonworks

4 results for "Hortonworks" on AWS Marketplace
Partner software pre-configured to run on AWS

| | | |
|--|---|-------------------------|
| | Hortonworks - ami-02ae336a [Copied ami-3fb7bf7a from us-west-1] Hortonworks Root device type: ebs Virtualization type: paravirtual | Select 64-bit |
| | HDP 2.1 SANDBOX NFS ENABLED - ami-36d95d5e nfs enabled - hortonworks 2.1 - sandbox Root device type: ebs Virtualization type: hvm | Select 64-bit |
| | Hortonworks sandbox with DMX-h - ami-4eb41126 Hortonworks sandbox with Syncsort DMX-h Root device type: ebs Virtualization type: hvm | Select 64-bit |
| | Hortonworks HDPCD_2.2 PracticeExam_v3 - ami-ac3f6ec4 Root device type: ebs Virtualization type: hvm | Select 64-bit |

3.3. You are looking for an AMI with a name similar to “**Hortonworks HDPCDeveloper_x.x PracticeExam_vx**” where the “**x**” values are version numbers that change periodically. There should only be one AMI that matches this name. Click the **Select** button next to it (as shown below):


Hortonworks HDPCD_2.2 PracticeExam_v3 - ami-ac3f6ec4
Select

Root device type: ebs Virtualization type: hvm
 64-bit

Step 4: Choose an Instance Type

4.1. Step 2 of the wizard is selecting an instance type. **You will be charged by Amazon based on the instance type you select.** To view the pricing for your region, visit the following page:

<https://aws.amazon.com/ec2/pricing/>

You can also read about Spot Instances on the pricing page, which provide an even cheaper alternative.

4.2. Select at least an **m3.2xlarge** or the cluster will not start cleanly. The instance runs an entire HDP cluster, so the more memory you purchase the more responsive the instance will run.

Step 2: Choose an Instance Type

Amazon EC2 provides a wide selection of instance types optimized to fit different use cases. Instances are virtual servers that can run applications. They have varying combinations of CPU, memory, storage, and networking capacity, and give you the flexibility to choose the appropriate mix of resources for your applications. [Learn more](#) about instance types and how they can meet your computing needs.

Filter by: All instance types Current generation Show/Hide Columns

Currently selected: m3.2xlarge (26 ECUs, 8 vCPUs, 2.5 GHz, Intel Xeon E5-2670v2, 30 GiB memory, 2 x 80 GiB Storage Capacity)

| | Family | Type | vCPUs | Memory (GiB) | Instance Storage (GB) | EBS-Optimized Available | Network Performance |
|-------------------------------------|-------------------|--|-------|--------------|-----------------------|-------------------------|---------------------|
| <input type="checkbox"/> | General purpose | t2.micro Free tier eligible | 1 | 1 | EBS only | - | Low to Moderate |
| <input type="checkbox"/> | General purpose | t2.small | 1 | 2 | EBS only | - | Low to Moderate |
| <input type="checkbox"/> | General purpose | t2.medium | 2 | 4 | EBS only | - | Low to Moderate |
| <input type="checkbox"/> | General purpose | m3.medium | 1 | 3.75 | 1 x 4 (SSD) | - | Moderate |
| <input type="checkbox"/> | General purpose | m3.large | 2 | 7.5 | 1 x 32 (SSD) | - | Moderate |
| <input type="checkbox"/> | General purpose | m3.xlarge | 4 | 15 | 2 x 40 (SSD) | Yes | High |
| <input checked="" type="checkbox"/> | General purpose | m3.2xlarge | 8 | 30 | 2 x 80 (SSD) | Yes | High |
| <input type="checkbox"/> | Compute optimized | c4.large | 2 | 3.75 | EBS only | Yes | Moderate |

Cancel Previous Review and Launch Next: Configure Instance Details

NOTE: You are charged by the hour for EC2 instances. If you start an instance and stop it 5 minutes later, you will be billed for an entire hour. However, you are not charged for a stopped instance until you resume it again.

4.3. After you have selected your instance type, click the button labeled **Next: Configure Instance Details**.

Step 5: Configure Instance Details

5.1. The defaults are fine for **Step 3: Configure Instance Details**. Click the **Next: Add Storage** button to continue.

Step 6: Add Storage

6.1. The default settings for **Step 4: Add Storage** are also fine, so simply click the **Next: Tag Instance** button to continue.

Step 7: Tag Instance

7.1. Give your instance a name like “Hortonworks Practice Exam”:

Step 5: Tag Instance

A tag consists of a case-sensitive key-value pair. For example, you could define a tag with key = Name and value = Webserver. [Learn more](#) about tagging your Amazon EC2 resources.

| Key (127 characters maximum) | Value (255 characters maximum) |
|---|--|
| <input type="text" value="Name"/> | <input type="text" value="Hortonworks Practice Exam"/> |
| <input type="button" value="Create Tag"/> (Up to 10 tags maximum) | |

7.2. Click the **Next: Configure Security Group** button to continue.

Step 8: Configure Security Group

8.1. In **Step 6: Configure Security Group**, you need to create a new security group. Start by giving it a name like “hwx-practice-exam”:

Assign a security group: Create a **new** security group
 Select an **existing** security group

Security group name:

8.2. Notice an SSH rule is already defined. Click the **Add Rule** button and add a **Custom TCP Rule** for port **5901** with **Custom IP** equal to **0.0.0.0/0**, as shown here:

| Type <i>i</i> | Protocol <i>i</i> | Port Range <i>i</i> | Source <i>i</i> | |
|-------------------|-------------------|---------------------|-----------------------|---|
| SSH ▾ | TCP | 22 | Anywhere ▾ 0.0.0.0/0 | ✕ |
| Custom TCP Rule ▾ | TCP | 5901 | Custom IP ▾ 0.0.0.0/0 | ✕ |

Add Rule

Warning
Rules with source of 0.0.0.0/0 allow all IP addresses to access your instance. We recommend setting security group rules to allow access from known IP addresses only.

[Cancel](#) [Previous](#) [Review and Launch](#)

8.3. Click the **Review and Launch** button to continue.

Step 9: Review Instance Launch

9.1. In **Step 7: Review Instance Launch**, you will be warned that this is not a free instance and you will be charged. There is also a warning about security that you can ignore.

9.2. Verify the AMI, instance type, and also that your security group has port 5901 open:

▼ AMI Details

[Edit AMI](#)



Hortonworks HDPCD_2.2 PracticeExam_v3 - ami-ac3f6ec4

Root Device Type: ebs Virtualization type: hvm

▼ Instance Type

[Edit instance type](#)

| Instance Type | ECUs | vCPUs | Memory (GiB) | Instance Storage (GB) | EBS-Optimized Available | Network Performance |
|---------------|------|-------|--------------|-----------------------|-------------------------|---------------------|
| m3.xlarge | 13 | 4 | 15 | 2 x 40 | Yes | High |

▼ Security Groups

[Edit security groups](#)

Security group name hwx-practice-exam
Description launch-wizard-4 created 2015-02-20T07:59:42.979-07:00

| Type ⓘ | Protocol ⓘ | Port Range ⓘ | Source ⓘ |
|-----------------|------------|--------------|-----------|
| SSH | TCP | 22 | 0.0.0.0/0 |
| Custom TCP Rule | TCP | 5901 | 0.0.0.0/0 |


9.3. Click the **Launch** button to continue:

▶ Instance Details [Edit instance details](#)

▶ Storage [Edit storage](#)

▶ Tags [Edit tags](#)

[Cancel](#) [Previous](#) [Launch](#)



Step 10: Create a Private Key File

10.1. Before launching an EC2 instance, you must create (or select an existing) key pair, which consists of a public key that AWS stores and a private key file that you need to download. You should see the following dialog window:

Select an existing key pair or create a new key pair



A key pair consists of a **public key** that AWS stores, and a **private key file** that you store. Together, they allow you to connect to your instance securely. For Windows AMIs, the private key file is required to obtain the password used to log into your instance. For Linux AMIs, the private key file allows you to securely SSH into your instance.

Note: The selected key pair will be added to the set of keys authorized for this instance. Learn more about [removing existing key pairs from a public AMI](#).

Choose an existing key pair

Select a key pair

cert-keypair.pem

I acknowledge that I have access to the selected private key file (cert-keypair.pem.pem), and that without this file, I won't be able to log into my instance.

10.2. Select “Create a new key pair” and give it a name like “hwx-practice-exam”:

Note: The selected key pair will be added to the set of keys authorized for this instance. Learn more about [removing existing key pairs from a public AMI](#).

Create a new key pair

Key pair name

hwx-practice-exam

Download Key Pair

10.3. Click the **Download Key Pair** button and save the file on your local machine.

Step 11: Launch the Instance

11.1. After you have downloaded the private key file, click the **Launch Instances** button:

Create a new key pair

Key pair name

hwx-practice-exam

Download Key Pair



You have to download the **private key file** (*.pem file) before you can continue. **Store it in a secure and accessible location.** You will not be able to download the file again after it's created.

Cancel

Launch Instances

11.2. You should see a confirmation screen that your instance is being launched:

Launch Status

✓ **Your instances are now launching**

The following instance launches have been initiated: [i-da99e2f5](#) [View launch log](#)



Get notified of estimated charges

[Create billing alerts](#) to get an email notification when estimated charges on your AWS bill exceed an amount you define (for example, if you exceed the free usage tier).

Step 12: Determine the Public DNS of the EC2 Instance

12.1. From the AWS menu, click on **Services**. In the drop-down menu select **EC2** to view the **EC2 Dashboard**. Your instance should appear in the list of **Instances**:

| Name | Instance ID | Instance Type | Availability |
|---------------------------|-------------|---------------|--------------|
| Hortonworks Practice Exam | i-da99e2f5 | m3.xlarge | us-east-1e |

12.2. Scroll to the right of the instance **Name** and you should see a column labeled **Public DNS**. The public DNS name is in the format **ec2-xx-xx-xx-xx.compute-1.amazonaws.com**.

12.3. Leave this window open in your Web browser, as you will need the public DNS name of your EC2 instance after you install the VNC client application.

Step 13: Install a VNC Client

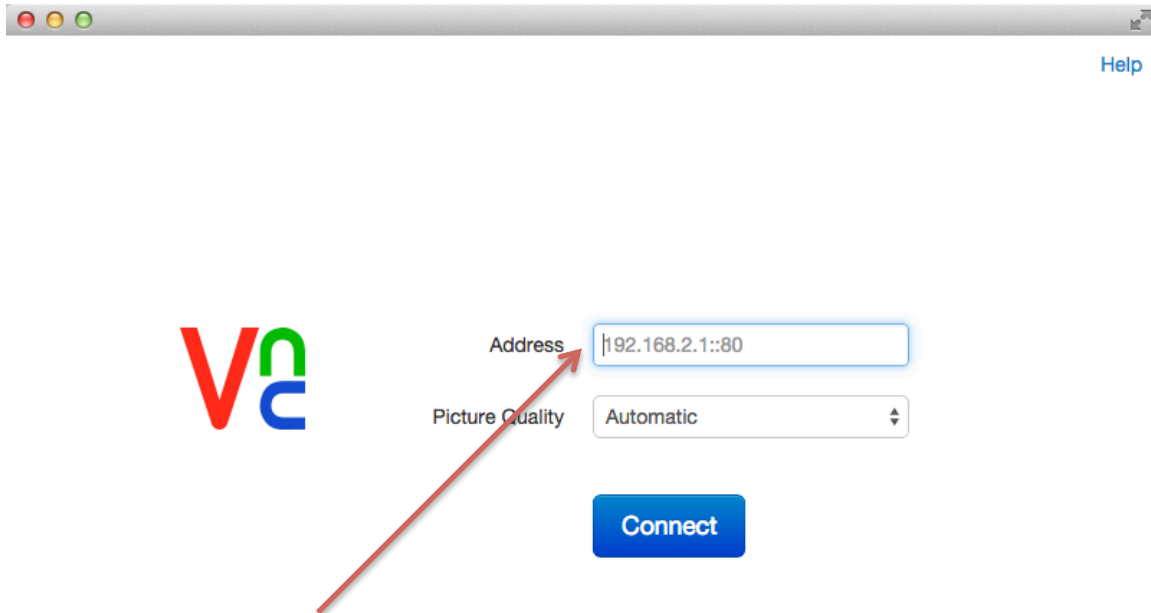
13.1. You will connect to your EC2 instance using VNC. You need a VNC client application installed on your local machine. Any VNC client should work. The instructions here are for the Real VNC Viewer app, which runs on a Mac, PC, or Linux machine.

13.2. Download and install the appropriate version of VNC Viewer for your computer at:

<http://www.realvnc.com/download/viewer/>

Step 14: Connect to the EC2 Instance


14.1. Start the VNC Viewer application. On a Mac the app looks like:



14.2. In the **Address** field, enter the public DNS name of your EC2 instance, followed by **:5901** (which is the port that the VNC server is listening on):

Address

Picture Quality



14.3. Click the **Connect** button. You will be warned about an unencrypted connection:

Unencrypted Connection ×

This connection will not be encrypted. Your authentication credentials will be transmitted securely, but all subsequent data exchanged while the connection is in progress may be susceptible to interception by third parties.

If you are connecting to VNC and it is licensed to use this premium feature, consider enabling it. If not, you will need to upgrade your VNC license.

Do not warn me for ec2-54-237-120-193.compute-1.amazonaws.com:5901 again

14.4. Click the **Connect** button. You will be prompted for a password, which is "hadoop":



14.5. Click the **OK** button and the desktop of your EC2 instance should appear:



IMPORTANT: The screen size of the EC2 instance is 1600x900. **This is also the screen size of the actual exam.** If you cannot see the entire screen, adjust the resolution of your monitor to a size that is at least 1600x900.

Step 15: Verify HDP is Running

15.1. There is a shortcut to Ambari on the Desktop. Double-click on it and login to Ambari. Both the username and password are **“admin”**:

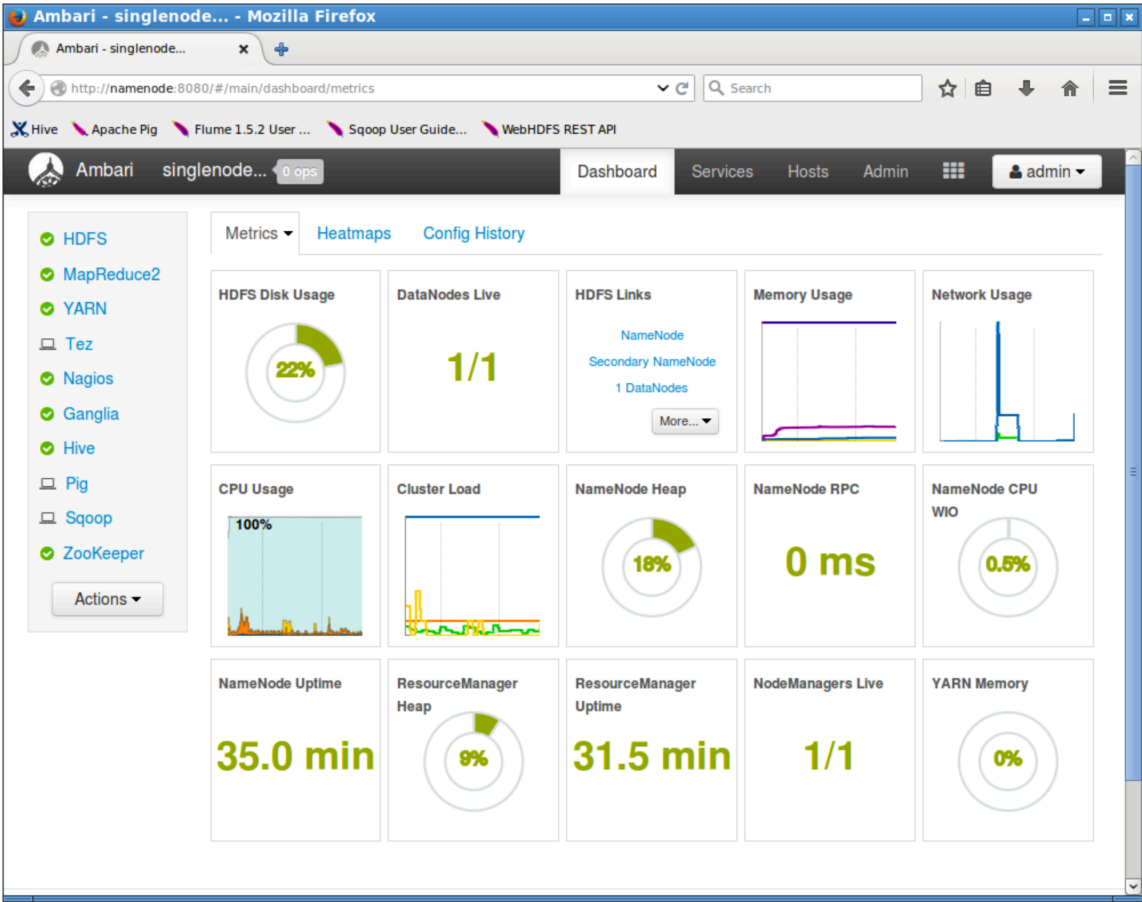
Sign in

Username

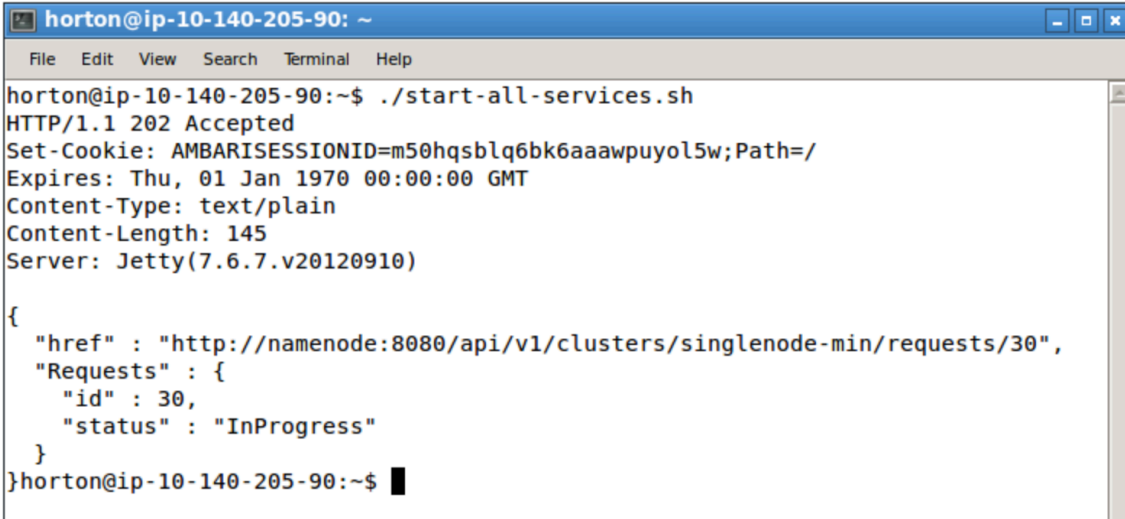
Password

Sign in

15.2. You should all of the services running:



15.3. If any of the services are down, you can start all HDP services by opening a Terminal window and running the `./start-all-services.sh` script in the `/home/horton` directory:

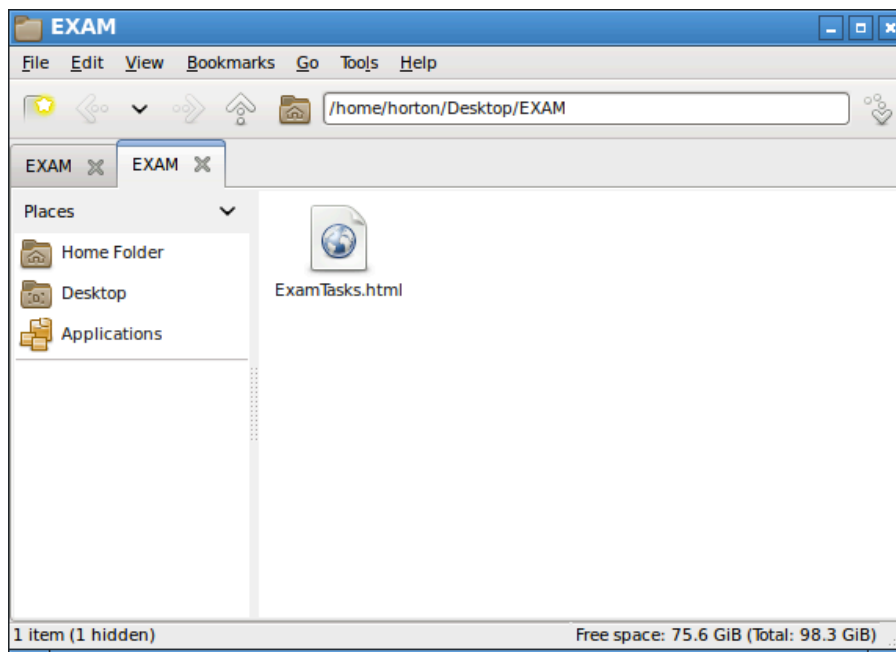


```
horton@ip-10-140-205-90: ~  
File Edit View Search Terminal Help  
horton@ip-10-140-205-90:~$ ./start-all-services.sh  
HTTP/1.1 202 Accepted  
Set-Cookie: AMBARISESSIONID=m50hqsblq6bk6aaawpuyol5w;Path=/  
Expires: Thu, 01 Jan 1970 00:00:00 GMT  
Content-Type: text/plain  
Content-Length: 145  
Server: Jetty(7.6.7.v20120910)  
  
{  
  "href" : "http://namenode:8080/api/v1/clusters/singlenode-min/requests/30",  
  "Requests" : {  
    "id" : 30,  
    "status" : "InProgress"  
  }  
}  
}horton@ip-10-140-205-90:~$ █
```

The above command sends a command to Ambari that starts all services. You can view the progress in Ambari.

Step 16: The Exam Tasks

16.1. The practice exam consists of 10 tasks that are reflective of what you may see on the actual exam. The tasks are in the **EXAM** folder on the desktop in an HTML file named **ExamTasks.html**:

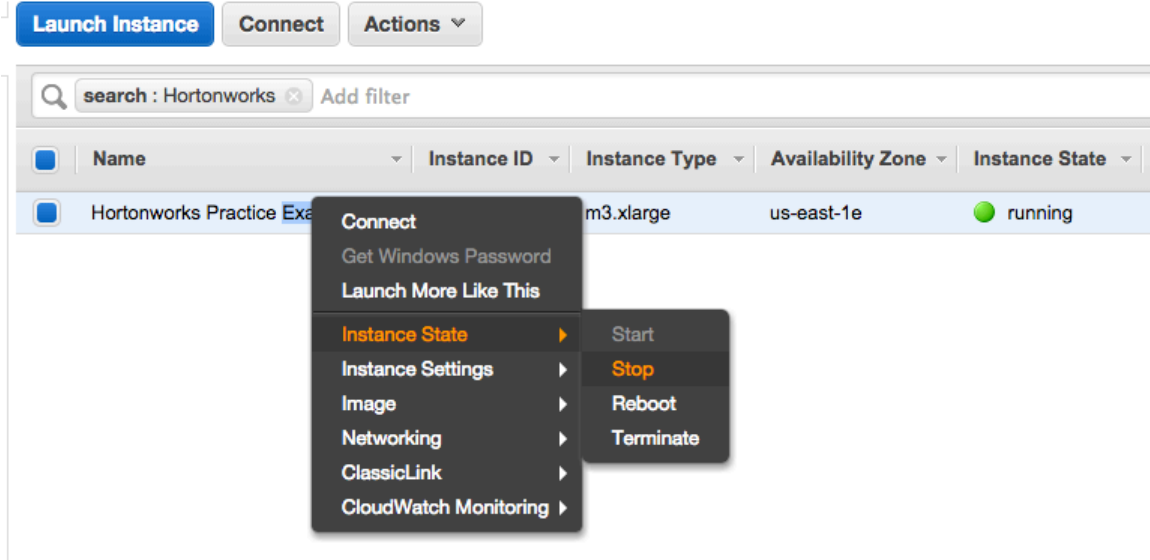


IMPORTANT: The practice exam is designed to familiarize you with the wording and length of the actual exam tasks. This practice exam does not cover all of the exam objectives and is only intended to assist you in becoming comfortable with the actual exam’s environment. The actual exam may contain fewer or more tasks, and may contain tasks on topics not found on this practice exam. Candidates should be familiar with all of the tasks listed on the exam objectives before attempting an exam.

Step 17: Stopping the Instance

17.1. When you are not working on the practice exam, you can stop the EC2 instance to avoid Amazon charges. From the **AWS Console**, open the **EC2 Dashboard**.

17.2. From the **Instances** page, right-click on the instance and select **Instance State -> Stop**:



17.3. When you want to resume the practice exam, simply **Start** the instance from this same **Instances** page.

Step 18: Terminating the Instance

18.1. When you are completely finished with the practice exam, you can terminate the instance by right-clicking on the instance and selecting **Instance State -> Terminate**. This will remove the instance from your AWS account.

IMPORTANT: If you have any issues or questions with this setup guide, please send an email to certification@hortonworks.com.